

PCT

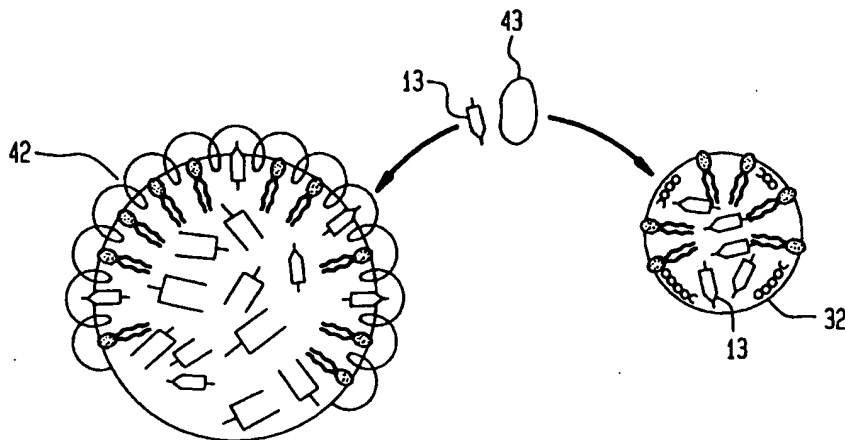
WORLD INTELLECTUAL PROPERTY ORGANIZATION
International Bureau



INTERNATIONAL APPLICATION PUBLISHED UNDER THE PATENT COOPERATION TREATY (PCT)

<p>(51) International Patent Classification ⁵ : G01N 33/92, 21/77, 33/53, 33/566, 33/00, 21/75, 21/76, C12Q 1/60</p>	<p>A1</p>	<p>(11) International Publication Number: WO 94/24567</p>
<p>(21) International Application Number: PCT/US94/03929 (22) International Filing Date: 11 April 1994 (11.04.94) (30) Priority Data: 08/046,772 13 April 1993 (13.04.93) US (71) Applicant: DIAGNESCENT TECHNOLOGIES, INC. [US/US]; 1 Executive Boulevard, Yonkers, NY 10701 (US). (72) Inventors: BROCIA, Robert, Wellstood; 15 Moore Road, Bronxville, NY 10708 (US). SWENSON, Theresa, Lym; Apartment 8B, 445 East 68th Street, New York, NY 10021 (US). (74) Agent: RUGGIERO, Charles, N., J.; Ohlandt, Greeley & Ruggiero, Suite 903, One Landmark Square, Stamford, CT 06901 (US).</p>		<p>(43) International Publication Date: 27 October 1994 (27.10.94) (81) Designated States: AU, BR, CA, CN, FI, JP, KR, NO, NZ, RU, European patent (AT, BE, CH, DE, DK, ES, FR, GB, GR, IE, IT, LU, MC, NL, PT, SE). Published <i>With international search report.</i></p>

(54) Title: DIAGNOSTIC KIT FOR CHOLESTERYL ESTER TRANSFER PROTEIN (CETP) ACTIVITY MEASUREMENT AND A NEW SYNTHETIC PARTICLE USED THEREIN



(57) Abstract

A diagnostic device is provided that determines the activity of CETP by the use of a new synthesized donor particle. The method in the diagnostic device for measuring the activity of cholesteryl ester transfer protein comprises: adding a prepared sonicated particle to a buffer to form a buffered solution, adding an intralipid emulsion to the buffered solution for the purpose of accepting the transfer of neutral lipid, adding cholesteryl ester transfer protein to the buffer solution, and reading the fluorescence of the buffer solution to measure the activity of the cholesteryl ester transfer protein. As shown in the figure, the transfer process includes the CETP (43) interacting with the prepared synthetic NBD-CE emulsion (32) and shuttles NBD-CE molecules (13) away from the core of the emulsion. The CETP (43) releases the NBD-CE (13) to an acceptor particle (42). The fluorescent intensity of the NBD-CE increases as the NBD-CE is moved from the synthetic HDL type sonicated emulsion (32) to the acceptor particle (42).

FOR THE PURPOSES OF INFORMATION ONLY

Codes used to identify States party to the PCT on the front pages of pamphlets publishing international applications under the PCT.

AT	Austria	GB	United Kingdom	MR	Mauritania
AU	Australia	GE	Georgia	MW	Malawi
BB	Barbados	GN	Guinea	NE	Niger
BE	Belgium	GR	Greece	NL	Netherlands
BF	Burkina Faso	HU	Hungary	NO	Norway
BG	Bulgaria	IE	Ireland	NZ	New Zealand
BJ	Benin	IT	Italy	PL	Poland
BR	Brazil	JP	Japan	PT	Portugal
BY	Belarus	KE	Kenya	RO	Romania
CA	Canada	KG	Kyrgyzstan	RU	Russian Federation
CF	Central African Republic	KP	Democratic People's Republic of Korea	SD	Sudan
CG	Congo	KR	Republic of Korea	SE	Sweden
CH	Switzerland	KZ	Kazakhstan	SI	Slovenia
CI	Côte d'Ivoire	LI	Liechtenstein	SK	Slovakia
CM	Cameroon	LK	Sri Lanka	SN	Senegal
CN	China	LU	Luxembourg	TD	Chad
CS	Czechoslovakia	LV	Latvia	TG	Togo
CZ	Czech Republic	MC	Monaco	TJ	Tajikistan
DE	Germany	MD	Republic of Moldova	TT	Trinidad and Tobago
DK	Denmark	MG	Madagascar	UA	Ukraine
ES	Spain	ML	Mali	US	United States of America
FI	Finland	MN	Mongolia	UZ	Uzbekistan
FR	France			VN	Viet Nam
GA	Gabon				

**DIAGNOSTIC KIT FOR CHOLESTERYL ESTER TRANSFER
PROTEIN (CETP) ACTIVITY MEASUREMENT AND
A NEW SYNTHETIC PARTICLE USED THEREIN**

BACKGROUND OF THE INVENTION

5 1. Field of the Invention

This invention relates to the field of medical diagnostic kits and a method for activity measurement of a protein. More particularly it relates to a reagent or kit that measures cholesteryl ester transfer protein (CETP) activity.

2. Description of the Prior Art

10 Cholesteryl ester transfer protein (CETP) is a protein that transfers cholesteryl ester (CE) from high-density lipoprotein (HDL) to low-density lipoprotein and very low density lipoprotein (VLDL). CETP will also transfer triglyceride (TG) among lipoprotein particles. For example, when a sample of VLDL or LDL, 1 or 10 micrograms of protein, respectively, is mixed with a sample of HDL, at total HDL cholesteryl ester of 4×10^{-10}
15 moles incubated at thirty seven degrees with a source of CETP, such as, one microliter of human plasma, cholesteryl ester will be transferred from the HDL to the LDL or VLDL particles. Typically, measurement of the CETP activity requires the cholesteryl ester associated with the HDL be provided with some type of label for monitoring the

movement of the HDL cholesteryl ester to the LDL and VLDL components after incubation. The activity measurement techniques also usually require a final separation step after incubation so that either accumulation of HDL cholesteryl ester in LDL or VLDL may be quantified, or loss of HDL cholesteryl ester from HDL may be quantified.

- 5 The HDL particle represents a donor of CE and the VLDL or LDL represent acceptors of CE.

There are several known techniques to measure cholesteryl ester transfer protein (CETP) activity. For example, an article entitled: Effect of Very Low-Density Lipoproteins on Lipid Transfer in Incubated Serum, by A. V. Nichols and L. Smith, J. Lipid Research, vol. 6, pp. 206-210 (1965), measures the activity of CETP by determination of cholesteryl ester CE mass transfer. The determination of CE mass transfer from high density lipoprotein (HDL) to very-low density lipoprotein (VLDL) and low density lipoprotein (LDL) requires the re-isolation of VLDL and LDL after incubation with HDL and the CETP source in order to determine the cholesteryl ester mass transfer.

- 15 The VLDL/LDL re-isolation from the incubation mixture is a technique that includes ultra-centrifugation for many hour so that the VLDL and LDL components are floated upwards through a density gradient as the HDL component of the incubation mixture sinks to the bottom of the centrifuge tube. Further processing of the sample requires a method of determining the amount or mass of cholesteryl ester associated with
- 20 the re-isolated VLDL or LDL and equating a change in mass to CETP facilitated transfer.

Later variations of this method of activity measurement have simplified mass determination by utilizing HDL that has a radioactive label associated with the CE.

While not stated in this article, the determination of CETP activity through tritium (3H) labeled cholesteryl ester (3H-CE) still requires the time consuming step of VLDL/LDL component re-isolation, or separation of VLDL or LDL from the 3H-CE containing HDL before the counts per minute of 3H-CE transferred can be determined. The present invention does not require the separation of any components of the incubation mixture nor does the present invention use radioactive isotopes.

An article entitled: Cholesteryl Ester Exchange Protein in Human Plasma Isolation and Characterization by N.M. Pattnaik, A. Montes, L.B. Hughes and D.B. Zilversmit, *Biochimica et Biophysica Acta* 530, pp. 428-438 (1978), discloses a method of activity measurement of CETP that also utilizes radioactive CE in HDL. This method is an improvement over the above method by simplifying the incubation mixture components separation or the re-isolation technique discussed above. In the cited article, separation of the LDL component from the HDL component is accomplished by precipitation of the LDL component of the incubation mixture. The LDL precipitate is pelleted by a relatively short, slow-speed centrifugation and the remaining HDL supernatant is counted. The loss of radioactivity from the HDL component is attributed to 3H-CE transferred to the LDL pellet. This method requires the use of radioactive isotopes and it is believed both prior art publications yield poor sensitivity and accuracy, characteristic of methods that require a high incident of sample manipulation.

An article titled: Fluorescent Determination of Cholesteryl Ester Transfer Protein (CETP) Activity in Plasma by N. Dousset and L. Douste-Blazy in *Clinical Chemistry*, vol. 38, No. 2, p. 306 (1982), is an improvement over previous methods of activity measurement since it discloses a technique that does not require radioactive components.

5 In this method, transfer activity of the CETP is determined by the measurement of transfer of a fluorescent labeled CE. In this article, the cholesteryl ester molecule utilized as the CETP substrate for transfer, has been bonded to a fluorescent molecule derived from pyrene. The pyrene labeled cholesteryl ester (PY-CE) is recognized by the CETP and the PY-CE may be detected by a fluorimeter. The accumulation of the PY-CE in the LDL
10 fraction is, however, only able to be determined after the separation of the LDL acceptor from the HDL donor.

An article entitled: Enhancement of The Human Plasma Lipid Transfer Protein Reaction by Apolipoproteins by T.G. Milner, K.W.S. Ko, T. Ohnishi and S. Yokoyama in *Biochimica Biophysica Acta* 1082, pp . 71-78 (1991), discloses a method for determining
15 the activity of CETP also utilizing a pyrene labeled CE (PY-CE). This method does not require separation or re-isolation of substrates, but uses the measurement of both monomer and excimer fluorescent emission from the pyrene label to determine a ratio thereof. The cited article is improving upon certain aspects of the previous method. However, the method is based upon excimer to monomer ratio to determine accumulation
20 of PY-CE in the acceptor and does not account for lipoprotein core viscosity changes affecting the excimer to monomer ratio. Pyrene labels have been used extensively in

physical biochemistry to study particle core viscosity. This cited method results in problems with accuracy as noted in this article. The method is inconvenient due to oxygen quenching of excimer emission and requires the constant gassing of samples with nitrogen.

The present diagnostic kit is readily usable for the purpose of performing simple
5 rapid and accurate tests to determine activity of CETP in a patient or group of patients. The kit does not utilize radioactive isotopes nor does the kit require the separation of donor and acceptor particles to accomplish activity measurements. The present kit yields a real time activity. Also, the reagent substrate emission is not subject to quenching by oxygen.

SUMMARY OF THE INVENTION

It is a principal object of this invention to provide a diagnostic device for rapid and accurate determination of CETP activity in the sample.

It is another object of the present invention to provide such a diagnostic device for
5 individuals in the field for the purpose of determining the relative activity of CETP.

It is still another object of the present invention to provide such a diagnostic device that is accurate and without utilization of radioisotopes.

It is yet another object of the present invention such a diagnostic device that indicates to a physician if a child or adult has high CETP activity so the physician may
10 recommend modification of the individual's diet before atherosclerosis is evidenced.

It is a further object of the present invention to provide a new synthetic donor particle that is used in such a device.

To the accomplishments of the foregoing objects and advantages, the present invention, in brief summary, comprises a diagnostic kit that determines the activity of
15 CETP by the use of a newly synthesized donor particle.

The present invention also includes a method for measuring the activity of cholesteryl ester transfer protein, the method comprising the steps of: adding a prepared

sonicated particle to a buffer to form a buffered solution simulating physiological conditions and adding an emulsion of lipid to the buffered solution of prepared sonicated particle. The lipid emulsion added is to act as an acceptor particle to accept CETP mediated transfer of NBD-CE. The acceptor lipid emulsion may be a commercially
5 available preparation, such as that marketed under the trade name 'Intralipid'. A source of CETP is added to the buffered solution. The CETP source may be normal human plasma. The buffered mixture is incubated, and the fluorescence of the solution is read to measure the activity of cholesteryl ester transfer protein.

The synthesized donor particle of the present invention comprises: a NBD-CE core
10 a monolayer of PC that surrounds the NBD-CE core and human apolipoprotein A-I (apoA-I) dispersed within the monolayer. The donor particle is representative of a high density lipoprotein particle.

BRIEF DESCRIPTION OF THE DRAWINGS

The foregoing and still other objects and advantages of the present invention will be more apparent from the following detailed explanation of the preferred embodiments of the invention in connection with the accompanying drawings wherein:

5 Fig. 1. is an exploded diagrammatic representation of a fluorescent lipid component of the synthetic emulsion particle of the present invention;

Fig. 2 is the molecular structure of the synthetic emulsion particle of Fig. 1;

Fig. 3 is an exploded diagrammatic representation of the phospholipid emulsifier used in the present invention;

10 Fig. 4 is a cross section of the synthetic emulsion particle used in the present invention; and

Fig. 5 illustrates a schematic of the transfer process measured by the device of the present invention.

DESCRIPTION OF THE PREFERRED EMBODIMENTS

Cholesteryl ester transfer protein (CETP) is a protein that may be isolated from the plasma of normal humans. CETP substrates include two neutrally charged or non-polar lipids, namely cholesteryl esters (CE) and triglycerides (TG).

5 These neutral lipids are hydrophobic and present within the core of lipoprotein particles. They include, but are not limited to, high density lipoprotein (HDL), low density lipoprotein (LDL), intermediate density lipoprotein (IDL) and very low density lipoprotein (VLDL). Most lipoproteins are freely circulating in the plasma. The CETP transfers the two neutral lipids CE and TG from one lipoprotein particle, the donor, to another
10 lipoprotein particle, the acceptor. A common donor-acceptor interaction is the transfer of the lipid CE from the lipoprotein HDL to the lipoprotein VLDL.

Referring to the figures and in particular, Fig. 1, in a preferred embodiment the present invention uses the fluorescent group, N-(7-nitrobenz-2-oxa-1,3-diazol-4-yl) amino-, referred to as NBD 11, covalently bonded to cholesteryl ester (CE) 12 to form the
15 NBD-CE 13 shown in Fig. 2. The NBD-CE 13 is 22-(N-(7-nitrobenz-2-oxa-1,3-diazol-4-yl) amino)-23,24-bisnor-5-cholen-3B-yl linoleate (NBD-cholesteryl linoleate). CETP will transfer both cholesteryl esters and triglycerides which are both classified as neutral lipids because they are non-polar with respite to charge. The preferred method disclosed in the present invention will be valuable in the measurement of all neutral lipid transfer but will be
20 discussed with respect to only CE transfer.

The NBD 11 labeled CE 12 forms a CE analogue NBD-CE 13. The NBD-CE 13 demonstrates a unique property associated with the fluorescent emission spectra. The NBD-CE 13 is contained in a highly concentrated area and is illuminated by a light of wavelength 465 nm, the fluorescent emission intensity will be less than that of the same
5 NBD-CE in an area at a lower concentration. The NBD lipid or NBD-CE 13 illuminated by an excitation source and excited above the ground state will either fluoresce (unquenched) or lose the energy by means of radiationless transitions (quenched).

In a preferred embodiment of the invention, a self-quenching fluorescent neutral lipid, such as NBD-CE 13 of Fig. 1, is emulsified by a suitable emulsifier such as
10 phospholipid like phosphatidylcholine (PC) 21 of Fig. 3 to form a monolayer that surrounds the NBD-CE core 13 as shown in Fig. 4. Although the term emulsify is exemplified by a specific technique below, the present invention is concerned with incorporating the NBD lipid into an emulsified particle efficiently so as to achieve self-quenching emission characteristics of the label. There are many techniques known to
15 emulsify a hydrophobic particle and many compounds that will act as emulsifying agents.

The emulsion is prepared by sonicating 1.32×10^{-5} or $1.32 \text{EE-}5$ moles of N-(7-nitrobenz-2-oxa-1,3-diazol-4-yl) amino (NBD) labeled neutral lipid with 13 mg of phosphatidylcholine (PC) at a power output just under that which causes the sonic probe to cavitate within the sample. A temperature of 50 degrees centigrade is maintained for
20 45 minutes in a buffer 10 ml of .1M KCl/10mM tris or trizma hydrochloride pH 8. The temperature is then lowered to 40 degrees centigrade and sonication energy to 2/3 of that

which causes probe cavitation and 12 mg of an apoA-I protein (found in HDL) in 800 μ L 2.5 M urea is added over 15 minutes. The mixture is slow speed centrifuged to remove titanium.

Alternatively, the sonication temperature should initially (before the addition of apoA-I) be maintained within several degrees above or below the melting point (approximately 100 degrees centigrade) of the NBD-CE. The emulsification process of NBD-CE may be facilitated with the addition of a higher melting point phospholipid, such as dimyristoylphosphatidylcholine (DMPC), under these alternative conditions.

The synthetic emulsion is isolated from the crude sonication mixture by adjusting the sonication mixture to a density of 1.063 g/ml by the addition of sodium bromide (NaBr). A portion (2 ml) of the mixture is carefully overlaid into a 3 ml ultracentrifuge tube containing 0.2 ml of 1.4 g/ml sodium bromide solution. A saline solution (density=1.006 gm/ml, 0.2 ml) is layered on top of the crude sonication mixture. The tube containing the three density, overlaid solutions is centrifuged at 35,000 x g for ten (10) hours. To harvest the working NBD-CE emulsion from the centrifuged tube, 0.25 ml of the top layer is aspirated from the tube, the next volume of 1.9 ml is collected as the emulsion. Isolation of the synthetic emulsion by this method yields a particle of density less than 1.4 g/ml and greater than 1.006 g/ml. The non-emulsified NBD-CE will float to the top of the centrifuge tube while free or aggregated apoA-I will sink to the bottom.

Fig. 4 illustrates the NBD-CE particle that results from the sonication, namely a NBD-CE core 13 surrounded by a monolayer of PC 21 with apoA-I 31 dispersed within the monolayer and associated with an aqueous phase that surrounds the particle. The particle 32 synthesized is representative of a high density lipoprotein (HDL) particle. The NBD-labeled neutral lipid NBD-CE 13 contained within the core of the synthetic particle will not yield a substantial fluorescent emission intensity when illuminated with excitation wavelength. Instead, the energy of the excited state is dissipated in radiationless energy transitions upon collision with other NBD-CE molecules. The non-fluorescent loss of energy is dependent upon molecular interactions associated with the core sequestered NBD-neutral lipid.

The monolayer of PC molecules 21 of Fig. 4, in the synthetic particle 32, is further illustrated in Fig 3. PC is comprised of a polar head group 22, and non-polar or hydrophobic tail 23, the conditions under which the co-sonication is performed enables the non-polar or hydrophobic tail 23 of the PC molecule to partition with the hydrophobic NBD-neutral lipid, NBD-CE 13 of Fig. 1. The partitioning of hydrophobic constituents of the co-sonication mixture traps the NBD-neutral lipid into a small area relative to the area of the aqueous phase. The PC emulsified NBD-neutral lipid components are in a stable non-aqueous or hydrophobic environment at high concentration with respect to collisional proximity and accordingly yield little fluorescence intensity.

The diagnostic device or kit for CETP activity includes the addition of a suitable amount, such as 300 picomoles of synthetic NBD-labeled neutral lipid emulsion to a first

container and adding 500 microliters of buffer. The preferred buffer includes 10 millimolar (mM) of trizma hydrochloride (HCl), 150 mM of sodium chloride (NaCl) and 2mM of ethylenediaminetetraacetic acid (EDTA), all buffer to pH 7.4. A suitable amount of acceptor particle or emulsion, such as a commercially available preparation sold under the trade name "Intralipid" by KabiVitrum Inc. of Alameda, CA, is then added to the buffered mixture in the first container for the purpose of accepting the transfer of neutral lipid. The acceptor will function as a sink for CETP mediated labeled neutral lipid transfer from the donor source. A suitable amount of CETP source is then added to the solution in the first container. A control for measurement purpose would be a second container made the same way as the first container, except that the CETP source is not added to the second container, and instead a volume of saline solution would be added as a control. The volume of saline solution is equivalent to the volume of the CETP source in the first container. In an alternative embodiment, both containers may contain plasma or other CETP source, yet one would be established as the control by incubating it at 4 degrees centigrade.

It should be understood that other lipid emulsions may be used, however Intralipid by KabiVitrum Inc. is presently preferred. This particular emulsion is a ten percent intravenous fat emulsion. Specifically it includes 10 grams per 100 ml of water.

Both containers are incubated at 37 degrees centigrade for a suitable amount of time and the fluorescence at 538 nanometers (nm) is read at an excitation wavelength of 465 nm in a standard laboratory fluorimeter. The first container, that receives the human

plasma or other CETP source, would be observed in the fluorimeter as increasing in fluorescence intensity over the incubation period. The second container, not receiving plasma but receiving a representative volume of saline solution, would not change in fluorescence intensity when measured in a fluorimeter. The background fluorescence
5 would then be determined by the second container and the intensity value subtracted from that of the first container. This kit or method is independent of the proportion present of the prepared sonicated or synthetic particle, the acceptor emulsion and the CETP source. The method only requires the addition of the synthetic particle at an amount within the detection limit of the fluorimeter used for measurement. The ratio of the acceptor
10 emulsion or particle to the synthetic particle is kept high enough so that inter-particle transfer of NBD-CE between synthetic donor particles does not occur. Additionally, the diagnostic kit is formulated with standard proportions to allow activity measurements of CETP to be compared from different laboratories.

Fig. 5 illustrates a schematic of the transfer process measured by the preferred kit
15 or diagnostic device. The kit includes an amber colored glass vial with 10 milliliters (ml) of a liquid mixture that comprises 125 microliters of the prepared sonicated particle described in Fig. 4 and 9.875 milliliter (ml) of the buffer or solution of 10 millimolar of trizma hydrochloride (HCL), 150 millimolars of sodium chloride (NaCl) and 2 millimolar
20 of ethylenediaminetetraacetic acid (EDTA) (tetrasodium salt hydrate). The buffer or solution is at a near physiological pH or pH of 7 to 8, preferably 7.4. The kit also includes a glass vial with a solution comprising 50 microliters of an acceptor, namely a lipid emulsion of triglyceride and phosphatidylcholine (10% triglyceride), such as that described

above sold under the trade name "Intralipid" by KabiVitrum Inc., and 9.5 ml of a buffer or solution of 10 millimolar of KCL, 150 millimolar of NaCl and 2 millimolar of EDTA, also at a near physiological pH or pH of 7 to 8, preferably 7.4. To utilize the present invention, equal volumes of each vial are dispensed into a sample container. A volume of
5 one four hundredth of the total volume of a patients plasma is added, and the mixture is allowed to incubate with the change in fluorescence intensity monitored according to the present invention.

As shown in Fig. 5, the transfer process includes the CETP 43 interacting with the prepared synthetic NBD-CE emulsion 32 and shuttles NBD-CE molecules 13 away from
10 the core of the emulsion. The CETP 43 releases the NBD-CE 13 to an acceptor particle 42. The florescent intensity of the NBD-CE increases as the NBD-CE is moved from the synthetic HDL type sonicated emulsion 32 to the acceptor particle 42.

The diagnostic kit is a valuable tool. It can be used to screen a large population of patients to uncover those with genetic idiosyncrasies such as hyperalphalipoproteinemia, a
15 disorder characterized by the absence of CETP in humans. It can also be used to screen for antibodies to CETP in a large number of samples, and to identify other inhibitors of CETP.

Having thus described the invention with particular to the preferred forms thereof, it will be obvious that various changes and modifications may be made therein without
20 departing from the spirit and scope of the invention as defined by the appended claims.

WHEREFORE WE CLAIM:

1. A synthesized donor particle comprising:

a fluorescent group covalently bonded to a cholesteryl ester to form a NBD-CE core;

5 a monolayer of phospholipid that surrounds the NBD-CE core; and

an apolipoprotein apoA-I dispersed within the monolayer and associated with an aqueous phase that surrounds the particle and the monolayer.
2. The synthesized donor particle according to claim 1, wherein the fluorescent group is N-(7-nitrobenz-2-oxa-1,3-diazol-4-yl) amino.
- 10 3. The synthesized donor particle according to claim 1, wherein the monolayer is a phosphatidylcholine monolayer.
4. The synthesized donor particle according to claim 2, wherein the monolayer is a phosphatidylcholine monolayer, and wherein the donor particle represents a high density lipoprotein particle.
- 15 5. The synthesized donor particle according to claim 1, wherein the NBD-CE core is a fluorescent neutral lipid.

6. The synthesized donor particle according to claim 5, wherein the core will not yield a substantial fluorescent emission intensity when illuminated with an excitation wavelength.

7. A synthesized donor particle comprising:

5 a fluorescent labeled core, N-(7-nitrobenz-2-oxa-1,3-diazol-4-yl) amino- covalently bonded to a cholesteryl ester to form a CE analogue NBD-CE, wherein the NBD-CE when contained in an area has a fluorescent emission intensity that is less than a highly concentrated area than in a lower concentration area;

a monolayer of phosphatidylcholine that surrounds the NBD-CE core; and

10 an apolipoprotein apoA-I dispersed in the monolayer associated with an aqueous phase that surrounds the particle and the monolayer,

wherein the donor particle represents a high density lipoprotein particle.

8. The synthesized donor particle according to claim 7, wherein the NBD-CE illuminated by an excitation source and excited above the ground state will either fluoresce
15 or lose the energy by means of radiationless transitions.

9. A synthesized donor particle comprising 22-(N-(7-nitrobenz-2-oxa-1,3-diazol-4-yl) amino) - 23,24 - bisnor-5-cholesterol-3B-yl linoleate (NBD-cholesteryl linoleate).

10. A method for measuring the activity of cholesteryl ester transfer protein, the method comprising the steps of:

5 adding a prepared sonicated particle to a buffer to form a buffered solution;

adding an emulsion of lipid to the buffered solution to accept the transfer of neutral lipid;

adding cholesteryl ester transfer protein to the buffered solution;

incubating the buffered solution; and

10 reading the fluorescence of the buffered solution to measure the activity of the cholesteryl ester transfer protein.

11. The method according to claim 10, wherein the cholesteryl ester transfer protein is found in human plasma.

12. The method according to claim 10, wherein the buffer is 10 millimolars of
15 trizma hydrochloride, 150 millimolars of sodium chloride and 2 millimolar of ethylenediaminetetraacetic acid.

13. A method for measuring the activity of cholesteryl ester transfer protein comprising:

interacting cholesteryl ester transfer protein with a synthetic N-(7-nitrobenz-2-oxa-1,3-diazol-4-yl) amino (NBD-CE) emulsion

5 shuttling NBD-CE molecules out of the emulsion; and

releasing the NBD-CE from the cholesteryl ester transfer protein to an acceptor, wherein the acceptor is an emulsion made with triglycerides and phosphatidylcholine.

14. The method according to claim 13, wherein the emulsion is a lipid emulsion of triglyceride and phosphatidylcholine.

10 15. The method according to claim 14, wherein the fluorescent intensity of the NBD-CE increases as the NBD-CE is moved from the synthetic HDL type emulsion to the acceptor.

16. A diagnostic kit for measuring the activity of cholesteryl ester transfer protein comprising:

15 a first glass vial having about 10 milliliters of a liquid mixture that includes:

125 microliters of a sonicated particle; and

about 9.875 milliliters of a buffer comprising 10 millimolars of trizma hydrochloride, 150 millimolars of sodium chloride and 2 millimolars of ethylenediaminetetraacetic acid, wherein the buffer has a pH between 7.0 and 8.0; and

a second glass vial having a solution that includes:

5 50 microliters of an acceptor, wherein the acceptor is a lipid emulsion of triglyceride and phosphatidylcholine; and

9.5 milliliters of a buffer having 10 millimolars of trizma hydrochloride, 150 millimolar of sodium chloride and 2 millimolars of ethylenediaminetetraacetic acid, wherein the buffer has a pH between 7 and 8.

10 17. The diagnostic kit according to claim 16, further comprising a container for receipt of equal volumes of each vial.

18. The diagnostic kit according to claim 16, wherein first glass vial is an amber colored glass vial.

15 19. A method for making a synthetic donor particle for measuring the activity of cholesteryl ester transfer protein comprising:

sonicating at a predetermined sonication energy a mixture of 1.32×10^{-5} moles of N-(7-nitrobenz-2-oxa-1,3-diazol-4-yl) amino labeled neutral lipid with 13 mg of phosphatidylcholine to form an emulsion;

maintaining a temperature of 50 degrees centigrade for 45 minutes in a buffer 10
5 ml of .1M KCl /10mM trizma hydrochloride at a pH between 7 and 8;

lowering the temperature to 40 degrees centigrade and lowering the sonication energy to 2/3 of the predetermined sonication energy;

adding over a period of 15 minutes about 12 mg of an apolipoprotein apoA-I in 800 uL 2.5 M urea; and

10 centrifugalizing to remove titanium.

20. The method according to claim 19, wherein the predetermined sonication energy is a power output just under that which causes a sonic probe to cavitate within the emulsion.

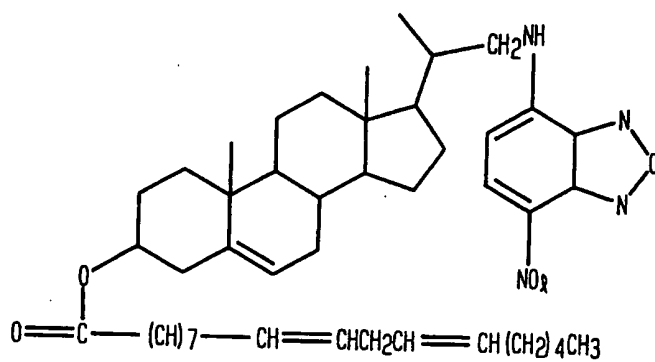
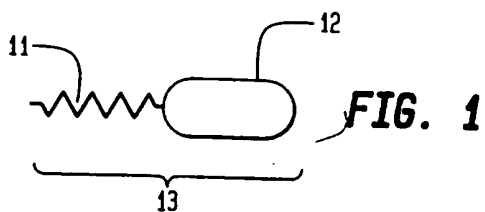


FIG. 3

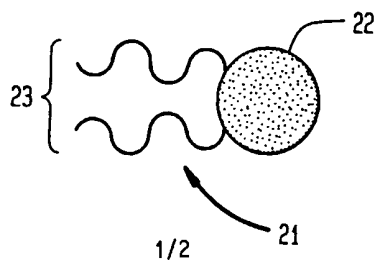


FIG. 4

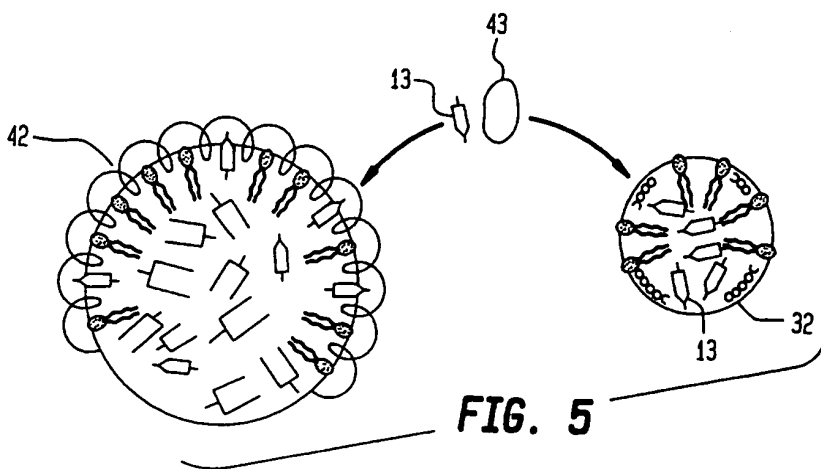
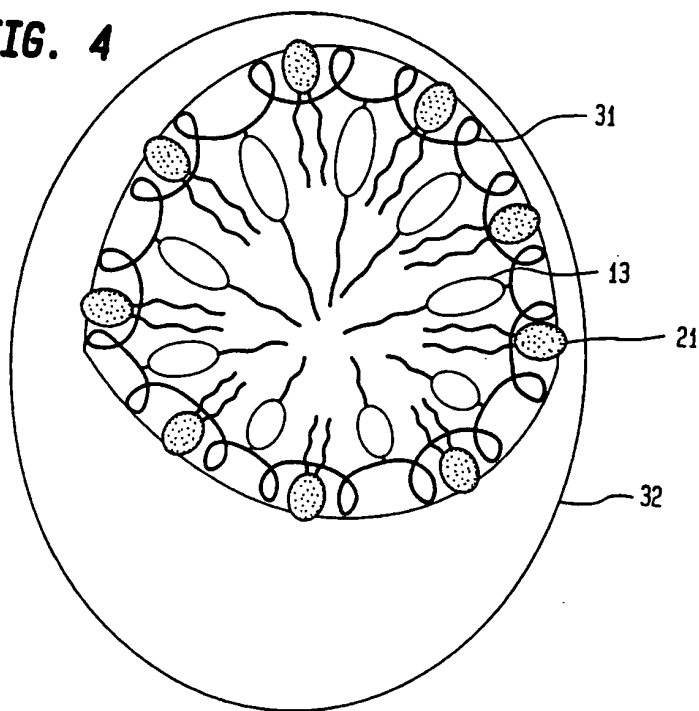


FIG. 5

INTERNATIONAL SEARCH REPORT

International application No.
PCT/US94/03929

A. CLASSIFICATION OF SUBJECT MATTER
 IPC(5) : Please See Extra Sheet.
 US CL : 435/11, 7.92, 7.9, 4; 436/809, 829, 501, 86, 166, 172.
 According to International Patent Classification (IPC) or to both national classification and IPC

B. FIELDS SEARCHED
 Minimum documentation searched (classification system followed by classification symbols)
 U.S. : 435/11, 7.92, 7.9, 4; 436/809, 829, 501, 86, 166, 172.

Documentation searched other than minimum documentation to the extent that such documents are included in the fields searched
 none

Electronic data base consulted during the international search (name of data base and, where practicable, search terms used)
 Please See Extra Sheet.

C. DOCUMENTS CONSIDERED TO BE RELEVANT

Category*	Citation of document, with indication, where appropriate, of the relevant passages	Relevant to claim No.
Y	Journal of Lipid Research, Volume 33, issued 1992, RYE ET AL, "Changes in the size of reconstituted high density lipoproteins during incubation with cholesteryl ester transfer protein: the role of apolipoproteins", pages 215-224, see this entire reference.	1-20
Y	Journal of Lipid Research, Volume 22, issued 1981, CRAIG ET AL, "Low density lipoproteins reconstituted with steroids containing the nitrobenzoxadiazole fluorophore", pages 687-696, see entire document.	1-20
A	US, A, 4,883,765 (TAMIR ET AL) 28 November 1989, see entire document.	1-20

Further documents are listed in the continuation of Box C. See patent family annex.

- Special categories of cited documents:
- *A* documents defining the general state of the art which is not considered to be part of particular relevance
 - *B* earlier document published on or after the international filing date
 - *L* document which may throw doubts on priority claim(s) or which is cited to establish the publication date of another citation or other special reason (as specified)
 - *O* document referring to an oral disclosure, use, exhibition or other means
 - *P* document published prior to the international filing date but later than the priority date claimed
 - *T* later document published after the international filing date or priority date and not in conflict with the application but cited to understand the principles or theory underlying the invention
 - *X* document of particular relevance; the claimed invention cannot be considered novel or cannot be considered to involve an inventive step when the document is taken alone
 - *Y* document of particular relevance; the claimed invention cannot be considered to involve an inventive step when the document is combined with one or more other such documents, such combination being obvious to a person skilled in the art
 - *A* document member of the same patent family

Date of the actual completion of the international search
 23 MAY 1994

Date of mailing of the international search report
JUN 29 1994

Name and mailing address of the ISA/US
 Commissioner of Patents and Trademarks
 Box PCT
 Washington, D.C. 20231
 Facsimile No. (703) 305-3230

Authorized officer
 Louise N. Leary *L. Leary for*
 Telephone No. (703) 308-0196

INTERNATIONAL SEARCH REPORT

International application No.
PCT/US94/03929

C (Continuation). DOCUMENTS CONSIDERED TO BE RELEVANT

Category*	Citation of document, with indication, where appropriate, of the relevant passages	Relevant to claim No.
A	US, A, 4,892,815 (KERSCHER ET AL) 09 January 1990, see entire document.	1-20
A	US, A, 5,183,738 (ADACHI ET AL) 02 February 1993, see entire document.	1-20
A	US, A, 5,135,716 (THAKORE) 04 August 1992, see entire document.	1-20
A	US, A, 5,128,318 (LEVINE ET AL) 07 July 1992, see entire document.	1-20
A, P	US, A, 5,217,873 (CARIS ET AL) 08 June 1993, see entire document.	1-20
A	US, A, 4,677,057 (CURTISS ET AL) 30 June 1987, see entire document.	1-20
A	US, A, 4,366,244 (PASCAL) 28 December 1982, see entire document.	1-20
A	US, A, 5,118,613 (McGOWAN) 02 June 1992, see entire document.	1-20

INTERNATIONAL SEARCH REPORT

International application No.
PCT/US94/03929

A. CLASSIFICATION OF SUBJECT MATTER:
IPC (5):

G01N 33/92, 21/77, 33/53, 33/566, 33/00, 21/75, 21/76; C12Q 1/60.

B. FIELDS SEARCHED

Electronic data bases consulted (Name of data base and where practicable terms used):

CAS:cholesteryl ester, transfer protein, CETP, lipoprotein, HDL, LDL, VDL, NBD, linoleate.
APS:cholesteryl ester, transfer protein, CETP, lipoprotein, HDL, LDL, VDL, NBD, linoleate.